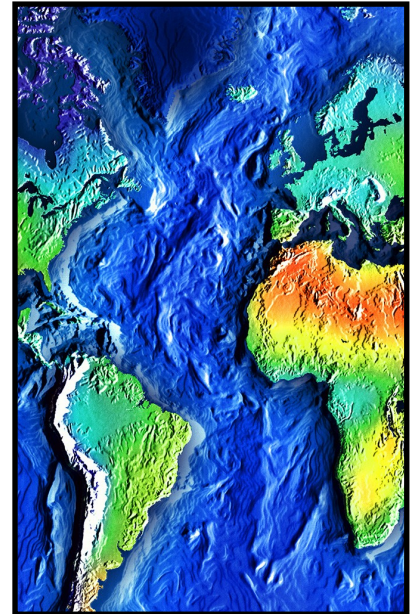




What is Geography in KS2 ?

Geography is a subject that can be split into 2 parts: physical and human. Physical geography is the study of Earth's physical features such as the formation of landscapes and climate. Human geography is studying how the land and environment is used by humans. Geography helps us understand where things are found, why they are there and how they develop and change over time.



Someone who studies Geography is called a Geographer. We will be learning about Alexander von Humbolt, Ellen Churchill Semple and Ptolemy.



I will be learning these skills in Geography:

- How to use the 8 points of a compass (North, North East, East, South East, South, South West, West, North West).
- How to use 4 and 6 figure grid references, symbol and keys.
- How to observe, measure and record human and physical features in the local area.
- How to use maps, atlases and globes to locate countries and describe the features I can see.